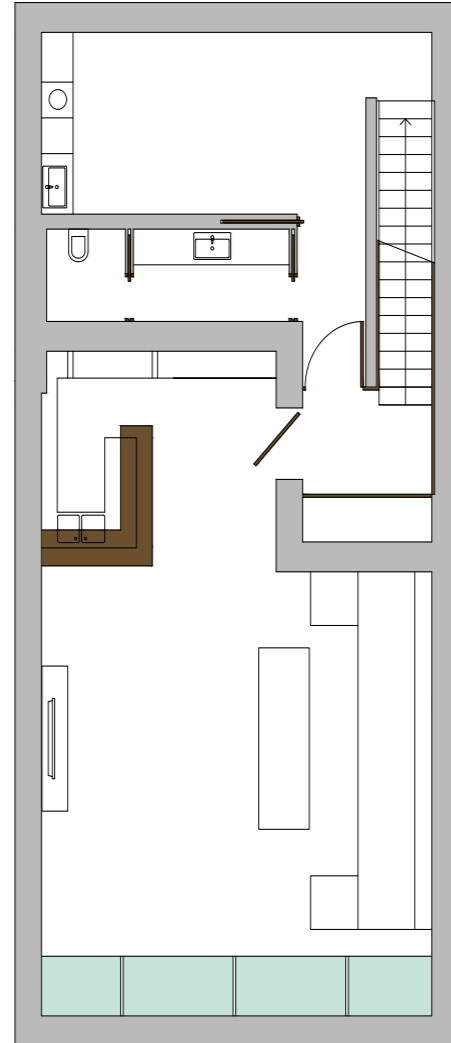


Basement

The 150 sqm basement is a large multi-purpose space for entertainment or for the family, with large lounge, bar, media centre, utility room and bathroom



This is an opportunity to purchase a modern mountainside Ibiza dream at the end of the prime Ibiza location, Morna Valley, in the area of San Carlos, Ibiza. Can Mariano Jaume, a slice of premium Ibiza real estate, comes to you from the internationally acclaimed Atzaró Group property portfolio, so quality and style are assured.

Can Mariano Jaume is modern with an abundance of floor to ceiling glass and cement sharp lines, yet in harmony with its natural setting and Ibiza's history with its soft limestone walls, tumbling bougainvilleas and rolling green gardens. Comprised of a large open plan living space with living room, dining room and kitchen, 5 suites, 6 bathrooms, multi-use basement living space, outdoor living, roof terrace, numerous terraces, a 23 metre pool, organic vegetable garden and grounds with lots of space, it is an Ibiza dream.

Ibiza life is luxurious, stylish and at one with nature. Comfortable, with lots of space, yet rooted to the earth and the island's rich past. Live your best Ibiza dream life at Can Mariano Jaume